

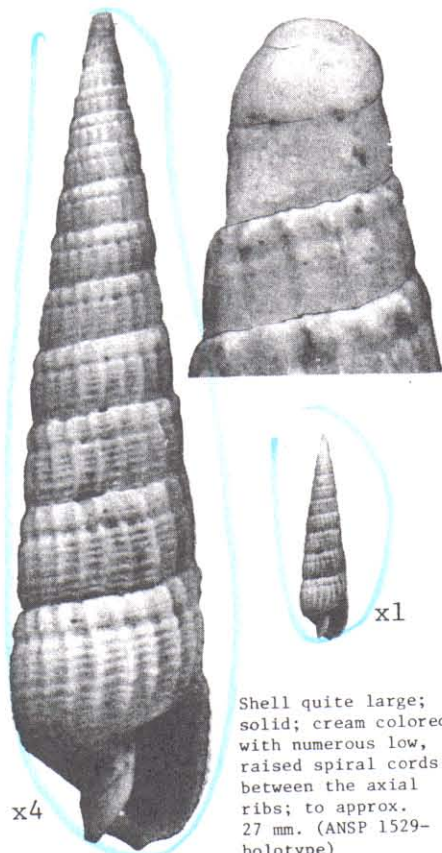
6. *Terebra hizenensis* Pilsbry. ヒゼンシヲタケ *HIRADO TAKI* 102  
 H. 17, Dj. 5.5, Dn. 5. Loc. Nagasaki-ken.

HIZENSIS

PILSBRY 1904 (102)

6. *Terebra*(*Strioterebrum*?) *hizenensis* Pilsbry *HIRASE 34* =TEXTILIS

Height 17 mm.; diam. maj. 5.5 mm., min. 5 mm.



x4

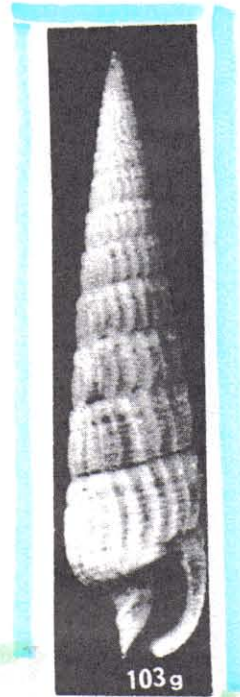
x1

Shell quite large; solid; cream colored; with numerous low, raised spiral cords between the axial ribs; to approx. 27 mm. (ANSP 1529-holotype)

*Terebra textilis hizenensis* Pilsbry

JAPAN

SK



103g

103g, Holotype of *T. hizenensis* Pilsbry, Academy Natural Sciences, Philadelphia; 26.0 mm.

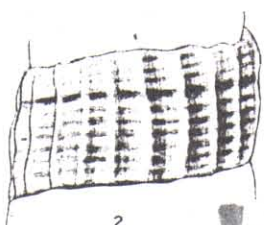
BRAT 8+

*Terebra hizenensis* n. sp. Pl. I, figs. 2, 2a.

Shell slender with straight lateral outlines, white, lusterless. Whorls 15½, nearly flat, the first two smooth, the first whorl rather globose and convex. Sculpture of rather strong, even, slightly arcuate rounded ribs, about 21 in number on the last whorl, and nearly as wide as their intervals. These ribs are cut but not interrupted by a spiral groove defining a subsutural fasciole, the groove being deeper in the interstices. Below the groove or furrow there are 6 to 8 spiral cords, low on the summits of the ribs, stronger in the intervals; and above the furrow there are 4 or 5 finer spiral threads. The suture is rather deeply impressed. The small aperture is irregularly trapezoidal; columella vertical; canal recurved. Length 26, diam. 6, longest axis of aperture 6 mm.



2a



2

Hirado, Hizen. Types No. 85,993, A. N. S. P., from No. 1,529 of Mr. Hirase's collection.

Similar to *T. subtextilis* Smith in color and sculpture, but in specimens of the same length this species is broader with a larger aperture.

PILSBRY 1904 64