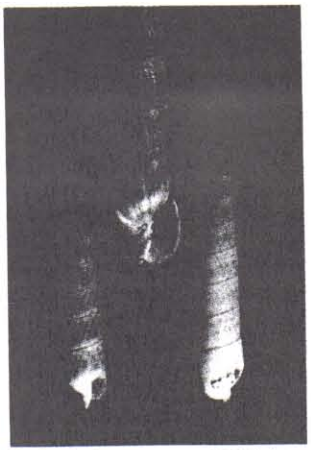


EVELYNÆ (1)
Clench & Aguayo '39

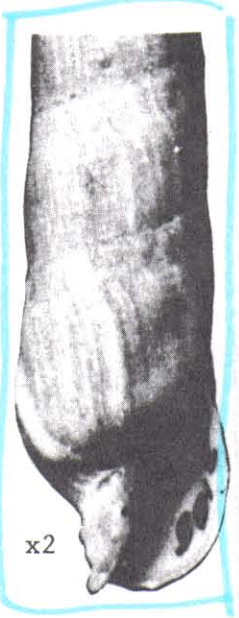
(V) (196)



Evelyn's Auger (1.5") 4 cm
Terebra evelynae Clench & Aguayo, 1939. Northern Cuba. Deep water; rare. Holotype illustrated.

TERRERIDAE

2726



Ivory-cream with light brownish markings; to approx. 120 mm. Offshore in rather deep water. (MCZ 135077-holotype)

Terebra evelynae
Clench & Aguayo
off YUCATAN

SK

196. *Terebra evelynae* Clench & Aguayo, 1939
(Pl. 50, fig. 196a-c)

1939 *Terebra evelynae* Clench & Aguayo, Mem. Soc. Cubana Hist. Nat. 13(3):196, pl. 29, fig. 1; 1974 Abbott, American Seashells ed. 2:261; 1982 Abbott & Dance, Compendium of Seashells p. 276 (holotype fig'd in color).

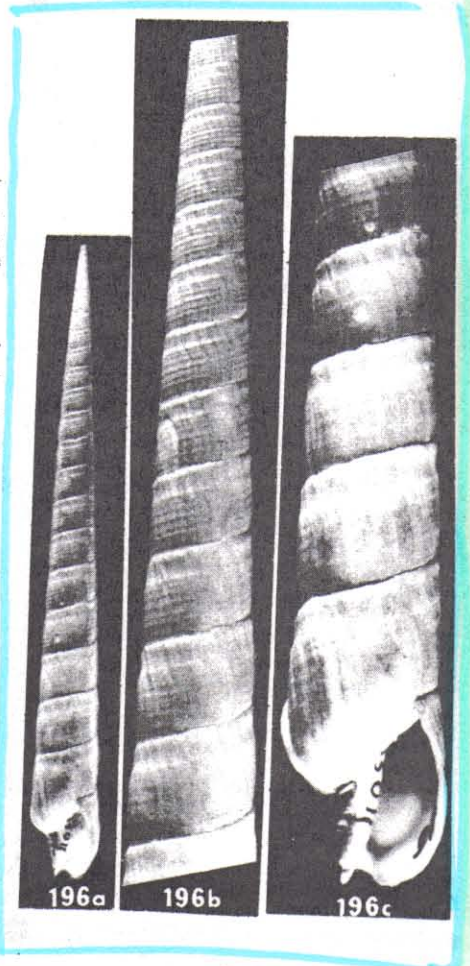
Description: Shell to 119 mm, slender; color whitish with indistinct band of straw color, early whorls of teleoconch darker and without straw-colored band; outline of whorls flat; subsutural band slightly concave, bordered by weak spiral cords; axial ribs indistinct, narrow, sinuous, widely spaced, extending from suture to suture, about 11 on penultimate whorl; spiral cords weak, equal in strength to ribs, about 8 on penultimate whorl; body whorl long, with faint white band below periphery; aperture elongate; columella straight.

Type locality: "Off northern Santa Clara Province, Cuba, 22°48'N, 78°48'W; 225 fms."

Distribution: Cuba; 65-421 m.

Type: Holotype MCZ no. 135077; 118.3 × 14.1 mm.

Discussion: This rare species has an extremely long and slender shell, which is quite unlike any other Western Atlantic terebrid. B. 196 - p 166



196a-c, *T. evelynae*
Clench & Aguayo. 196a, Holotype Museum Comparative Zoology, Harvard No. 135077; 118.3 mm. 196b, Middle whorls. 196c, Lower whorls.

Terebra evelynae new species

(PLATE 29, FIG. 1)

Description: Shell exceedingly slender, imperforate and solid. Whorls 25 remaining (loss of 5 whorls) almost flat and tapering to a very sharp summit. Color consisting of two broad bands of light brown with a narrow band of white at the whorl periphery. The bands of brown are somewhat blotched in a single adult specimen (holotype) though this color is evenly disposed in two of the smaller specimens. Spire slender and forming a very acute point. Angle of spire 7°. Aperture subovate, small and with the palatal edge slightly sinuous in profile. Parietal wall rather thickly glazed. Palatal lip simple with a rather deep notch (the canal) at the base. Columella thickened and inclined slightly. Sculpture on the early whorls of axial threads, slightly sinuous which on the later whorls becomes less pronounced and coalesces on the last few whorls as strong and irregular growth lines. Spiral threads are also present on the early whorls and though they persist they become less apparent on the later whorls. Subsutural depression rather pronounced on the early whorls which broadens and becomes less strong on the last four whorls. Suture slightly impressed.

Length	Width	Whorls		
118	13.5 mm.	24 (incomplete)	Holotype	(M. C. Z.)
120.5	12.8 "	22 "	Paratype	(M. Poey)
75.1	9.1 "	19 "	"	(M. Poey)
54	6.8 "	21 (complete)	"	(M. C. Z.)

Holotype: Mus. Comp Zoöl. no. 135,077, *Atlantis* station no. 2981 (N. Lat. 22° 48'; W. Long. 78° 48') off Northern Santa Clara Prov., Cuba, 225 fathoms. March 10, 1938. Two paratypes from the above locality and one each from *Atlantis* station no. 2999 (N. Lat. 23° 10'; W. Long. 81° 29') off Matanzas, Cuba, 145-230 fathoms, March 17, 1938, and *Atlantis* station no. 2982-E (N. Lat. 22° 45'; W. Long. 78° 45') off Punta Alegre, Camagüey Province, Cuba, 150-180 fathoms, March 11, 1938.

Remarks: A rather remarkable species because of its great length in relation to its width. It appears to be nearest *T. nassula* Dall, but differs in its much finer sculpture and proportionally, a much narrower shell for its length. CLENCH & AGUAYO *REP. SOC. CUB. HIST. NAT.* 13(3)



FIG. 1. *Terebra evelynae* Cl. and Ag. Holotype, nat. size.

b196