

CADDEYI  
 CERNOHORSKY & BRATCHER  
 1982 (50)  
 (V)

***Terebra caddeyi* new species**  
 (Figs. 4, 12)

**Diagnosis:** A long, slender, flat-sided terebrid shell, shiny tan, and with 3 or 4 spiral grooves per whorl.

**Description:** Shell long, slender, with 25 whorls; color shiny tan; outline of whorls straight; protoconch missing; 3 spiral bands, each defined by a spiral groove, occur anterior to suture; posterior band narrow, without nodes; center band of obsolete nodes; anterior band flatter and scarcely noded; no axial sculpture except axial striae; body whorl with deep groove posterior to periphery, followed by 3 weak grooves; aperture small, quadrate; columella curved, with moderately heavy parietal callus; siphonal notch broad.

**Dimensions:** Holotype 52.7 × 6.9 mm. Paratypes from 44.4 × 5.4 to 53.4 × 6.6 mm.

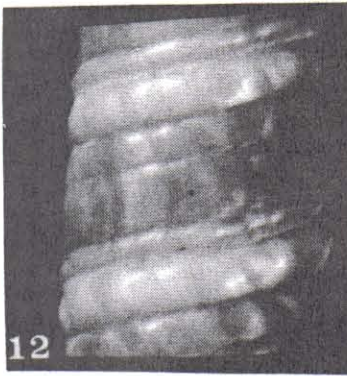
**Type Locality:** Korere Village, Rabaul, Papua, New Guinea, 3 m. in depth, on volcanic sand.

**Type Material:** Holotype LACM no. 1967. Paratypes Bratcher coll. (1); Caddey coll. (2).

**Distribution:** Known only from type locality.

**Discussion:** *Terebra lima* Deshayes, 1857, also has a flat-sided shell, but it lacks the sheen of this species and has almost cancellate sculpture with spiral cords and axial sculpture forming small nodes at intersections. *T. jenningsi* Burch, 1965, has a concave outline, a cord at the periphery of the body whorl, and more spiral grooves. It also lacks sheen. This species is named for P. T. Caddey, who collected the type lot.

C 582 p 63



4 & 12: *Terebra caddeyi* Bratcher & Cernohorsky, new species. Holotype LACM no. 1967. 52.7 mm.

50. ***Terebra caddeyi***  
 Bratcher & Cernohorsky, 1982  
 (Pl. 15, figs. 50a-b)

1982 *Terebra caddeyi* Bratcher & Cernohorsky, Nautilus 96(2): figs. 4, 12.

**Description:** Shell to 53 mm; color shiny tan; outline of whorls straight; sculpture of 3 spiral bands, each defined by a spiral groove, posterior band narrow, without nodes, center band of obsolete nodes, anterior band flatter and scarcely noded; axial sculpture absent except for striae; body whorl with deep groove posterior to periphery, followed by 3 weak grooves; aperture small, quadrate; columella curved, with moderately heavy parietal callus; siphonal notch broad.

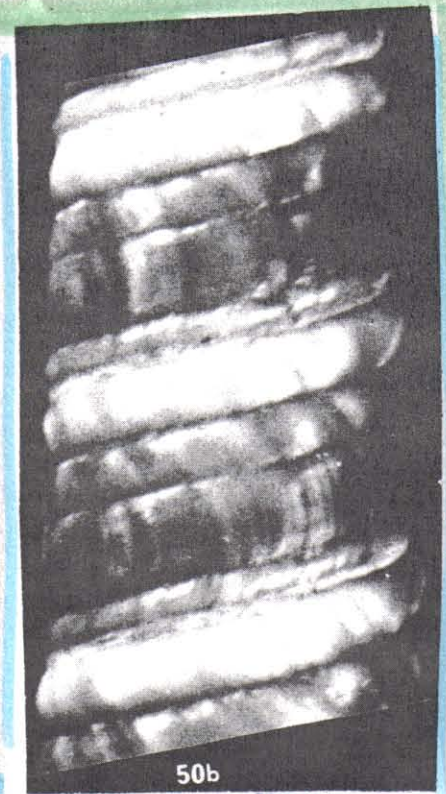
**Type locality:** "Korere Village, Rabaul, Papua New Guinea, 3 m."

**Distribution:** Known only from the type locality.

**Type:** Holotype LACM no. 1967; 52.7 × 6.9 mm.

**Discussion:** This shiny caramel-colored shell, named for its original collector, P. T. Caddey, is monochromatic from the protoconch to the parietal callus. For comparison refer to *T. trise-*  
*riata* (45).

B-50-p 70



50a, b, *T. caddeyi* Bratcher & Cernohorsky. 50a, Holotype Los Angeles County Museum No. 1967; 52.7 mm. 50b, Middle whorls.